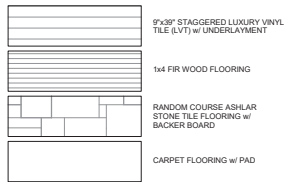


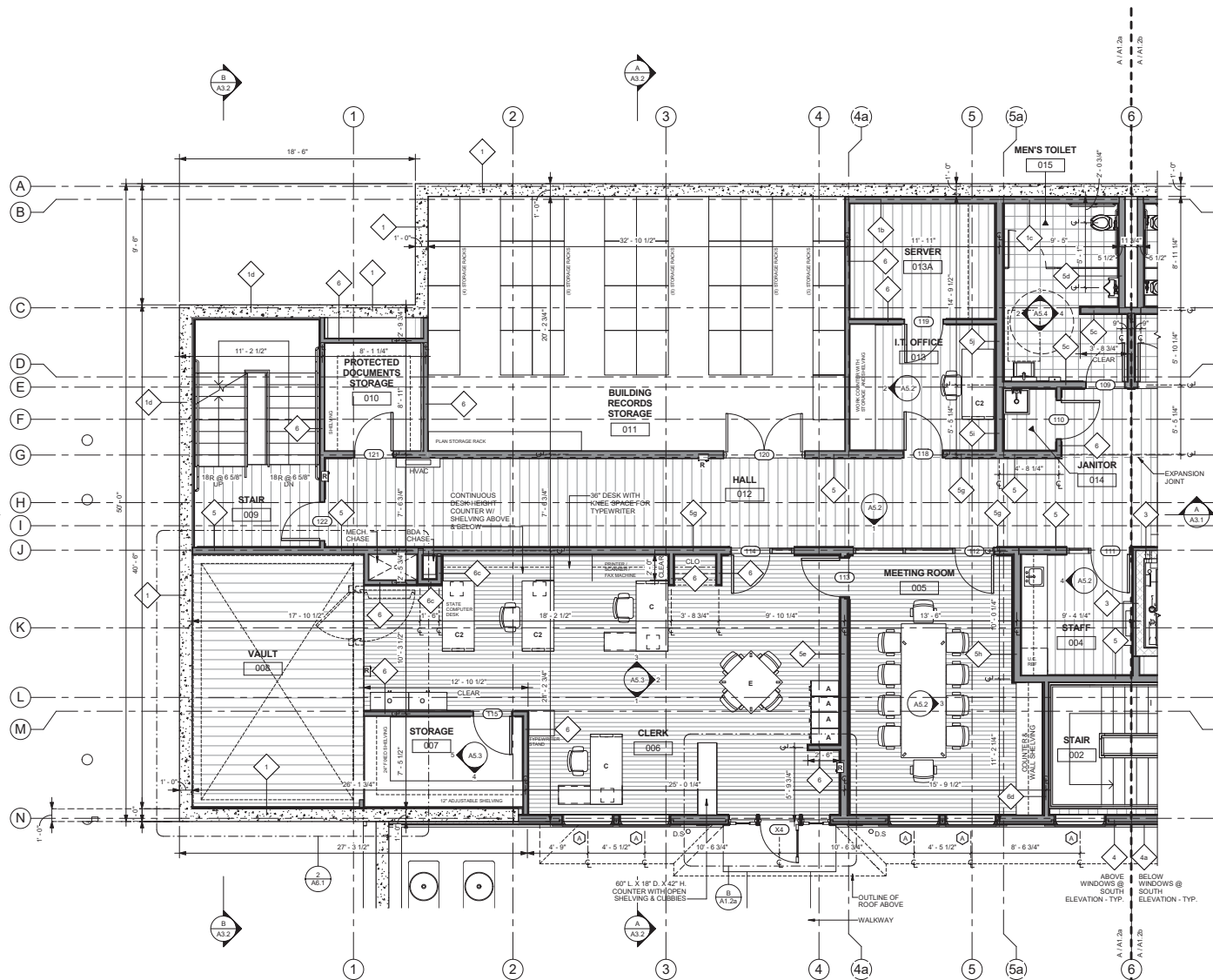
**(B) ENLARGED ENTRY AT CLERK 006**  
1/2" = 1'-0"

**FLOOR FINISH LEGEND**



**FURNITURE LEGEND**

- A** 4-DRAWER TALL FILE CABINET (APPROX. 15" W. X 26.5" D. X 52" H. "NON 310 SERIES" OR EQUAL)
- B** 2-DRAWER SHORT FILE CABINET (APPROX. 15" W. X 26.5" D. X 29" H. "NON 310 SERIES" OR EQUAL)
- C** 30" X 60" DESK WITH 30" RETURN AND TASK CHAIR
- C1** 30" X 72" DESK WITH 30" RETURN AND TASK CHAIR
- C2** 30" X 60" DESK WITH TASK CHAIR
- D** GUEST CHAIR
- E** 36" SQUARE MEETING TABLE WITH 4 CHAIRS
- F** LARGE CONFERENCE TABLE WITH 8 CHAIRS
- G** 60" X 18" CRENDENZA
- H** OVERSIZED DESK WITH 42" RETURN AND TASK CHAIR
- I** 3' X 6' MEETING TABLE WITH 2 CHAIRS
- J** FLAT FILE
- K** 4 SHELF BOOKSHELF, 36" W. X 60" H.
- L** 36" X 72" WORK TABLE
- M** 42" X 72" CONFERENCE TABLE WITH 6 CHAIRS
- N** 2' X 4' WORK TABLE
- O** 36" W. X 18" D. X 6' H. STORAGE CABINET
- P** 2-DRAWER TALL LATERAL FILE CABINET (APPROX. 30" W. X 59 1/4" D. X 26" H.)
- Q** 4-DRAWER TALL LATERAL FILE CABINET (APPROX. 30" W. X 19 1/4" D. X 53" H.)
- R** SURFACE MOUNTED OR SEMI-RECESSED FIRE EXTINGUISHER CABINET, F.E. TYPE T.B.D.



**(A) LOWER LEVEL - ENLARGED FLOOR PLAN WEST**  
1/4" = 1'-0"



**Architect**  
K&K  
Keevan & Kelly Architects, LLC  
189 Main Street  
Falmouth, Massachusetts 02540  
Tel: 508-540-0075

**Civil / Structural Engineers**  
John Lohy, P.E.  
12 Surveys Lane  
Wareham, Massachusetts 02568  
Tel: 508-493-5153

**Mechanical, Electrical, Plumbing and Fire Protection Engineers**  
Griffin & Vary, Inc.  
12 Kendrick Road  
Wareham, Massachusetts 02571  
Tel: 508-555-0500

**Landscape Architect**  
T.L. Shady  
35 North Main Street  
Falmouth, Massachusetts 02540  
Tel: 774-763-2461

**Security and Technology Engineers**  
Cassia Calvada - Cresson  
Consulting Engineers, Inc.  
370 Fairport Corner Road  
Dartmouth, Massachusetts 02747  
Tel: 508-698-5700

**Code Consultant**  
JENSEN HUGHES  
117 Metro Center Blvd  
Wareham, Rhode Island 02886  
Tel: 401-735-8992

**Owner's Project Manager**  
Doverdale Projects, Inc.  
112 South Street  
Boston, Massachusetts 02111  
Tel: 608-265-0000

**TOWN OF OAK BLUFFS  
NEW TOWN HALL  
56 SCHOOL STREET  
OAK BLUFFS, MASSACHUSETTS**



**REVISIONS**

NO.	DATE	DESCRIPTION

PROJECT NO. 018TH  
DESIGNER: K&K  
DATE: 3 JANUARY 2018  
SHEET TITLE: ENLARGED LOWER LEVEL PLAN

SCALE: As indicated  
DATE: 3 JANUARY 2018

**A1.2a**

1/2/2018 2:09:03 PM